

DESCRIÇÃO DO PRODUTO

Product Number CS30CM

ANSI/TIA Category 6

Cable Component Type Horizontal

Cable Type U/UTP (unshielded)

Conductor Type, singles Solid

Conductors, quantity 8

Jacket Color Gray

Pairs, quantity 4

Transmission Standards ABNT/NBR 14703 | ANSI/TIA-568.2-D | Anatel | CENELEC EN 50288-6-1 | ISO/IEC 11801 Class E

DIMENSIONS

Cable Length 304.8 m | 1000 ft

Diameter Over Conductor 0.978 mm | 0.0385 in

Diameter Over Jacket, nominal 5.588 mm | 0.22 in

Conductor Gauge, singles 24 AWG

ELECTRICAL SPECIFICATIONS

Characteristic Impedance 100 ohm

dc Resistance Unbalance, maximum 5 %

dc Resistance, maximum 9.38 ohms/100 m | 2.859 ohms/100 ft

Delay Skew, maximum 45 ns

Dielectric Strength, minimum 1500 Vac | 2500 Vdc

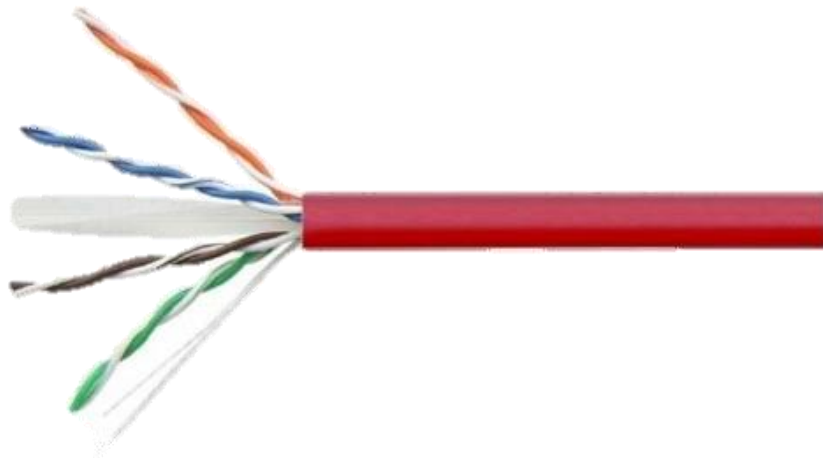
Mutual Capacitance at Frequency 5.6 nF/100 m @ 1 kHz

Nominal Velocity of Propagation (NVP) 67 %

Operating Frequency, maximum 250 MHz

Operating Voltage, maximum 80 V

Propagation Delay, maximum 536 ns/100m @250MHz



MATERIAL SPECIFICATIONS

Conductor Material Bare copper

Insulation Material Polyolefin

Jacket Material PVC

MECHANICAL SPECIFICATIONS

Minimum Bend Radius Note 4 times the outer cable diameter

ENVIRONMENTAL SPECIFICATIONS

Installation temperature -0 °C to +60 °C (-32 °F to +140 °F)

Operating Temperature -20 °C to +60 °C (-4 °F to +140 °F)

Storage Temperature -20 °C to +80 °C (-4 °F to +176 °F)

Environmental Space Non-plenum

Flame Test Method ABNT/NBR 14705 | CM

PACKAGING AND WEIGHTS

Cable weight 33.335 kg/km | 22.4 lb/kft